

Innovative Solutions



Corporate Presentation

Experience in machining with chip removal, as well as being the Specialist, with over 30 years of experience, in machining on sintered workpieces, both with standard hardness characteristics and sinter tempered.

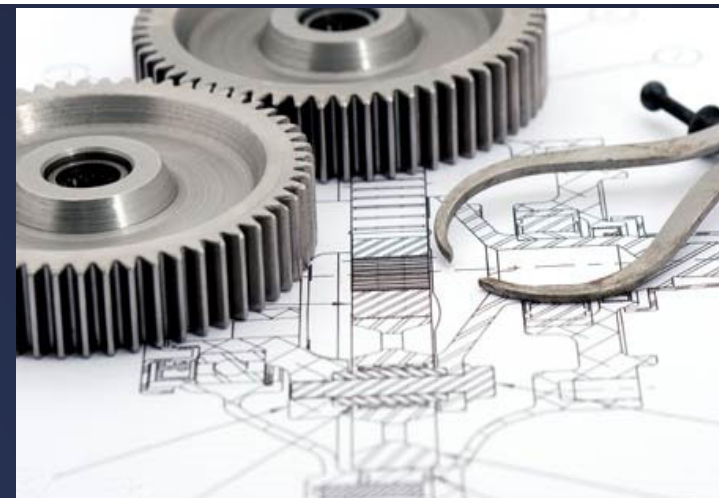
Study, Design and Realization part gripping. Study and Research reliable and competitive machining partners. Study and Research of Optimal Cutting Technology.

Analysis and Optimization of the tool path strategy that will allow us to optimize the machining cycle.

COMPANY NAME **S.C.F. ENGINEERING S.R.L.**

Manager: Malmusi Francesco

OUR MISSION IS YOUR GOAL



S.C.F. ENGINEERING S.R.L.

A company projected to provide High Consulting in the field of Precision Mechanical Manufacturing for medium to high series production with its own Know-How and making use of long-established Partnerships



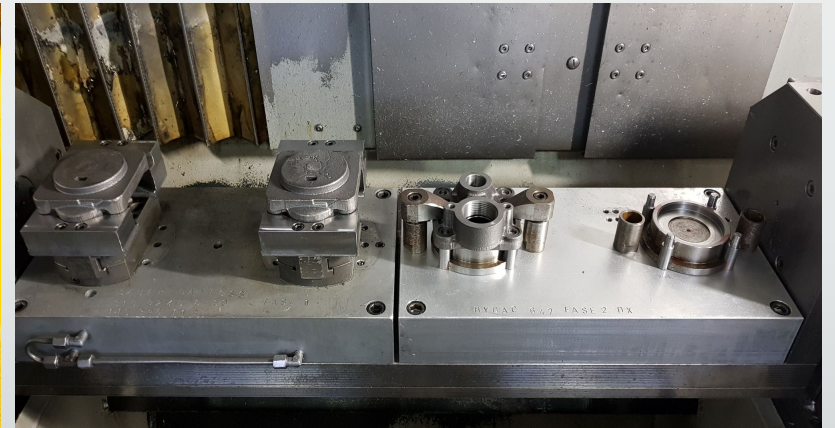
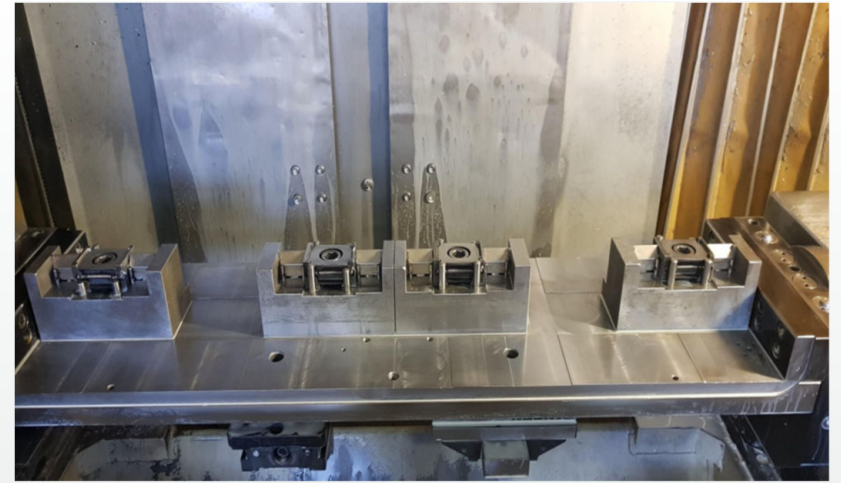
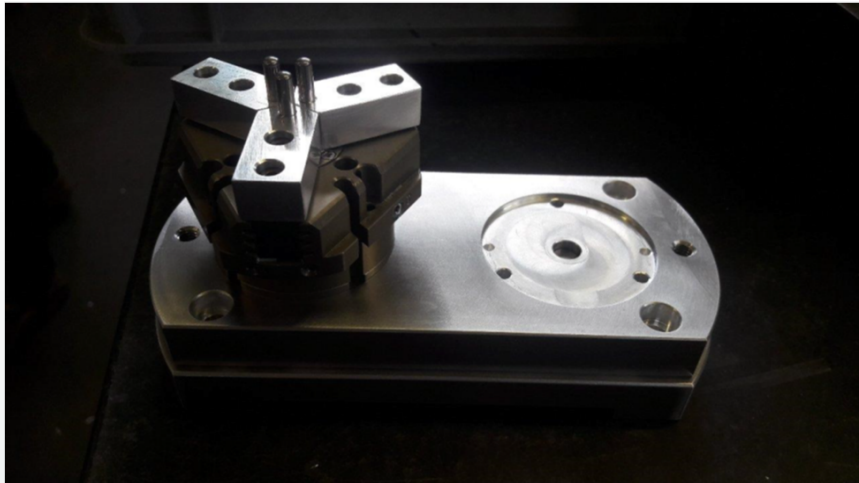
OUR MISSION IS YOUR GOAL

Our Know-How at your disposal

- Technical Assistance, Training and Consulting for the optimization of existing production processes
- Study and Design piece taking with 3D presentation, with analysis and study of Time and Methods
 - **Specialist** in Sinter Parts and beyond
 - **Workpiece** pick-up on machine tool
 - **Workpiece** gripping for part manipulation with both cobot and gantry robots
 - **Study and Design** of Robotic Areas. Re-design of existing robotic areas.
 - **Study and Research** of the technologies best suited to the Customer's production needs (both as workpiece gripping equipment and machine tools and as technological change for chip removal)
- Turn-key management
 - **Project Management** and Installation with execution of the first Step-Up parts: machine tool and equipment
 - **Analysis and Compilation** of program for CNC, Fanuc ISO and/or Parametric language
- Training courses for ISO/Fanuc and Parametric programming (...with brief mentions for reading technical drawing)
- **Research and Selection** of the best cutting solutions to increase productivity and/or give greater stability to the production process
- **Search and Selection** **Reliable** and competitive production partners according to the customer's required needs
- **Research and Selection** of **new** technologies for both production and in-process part inspection (in-process dimensional inspection)
- Consulting in the **Development, Upgrading, Implementation** of Quality Management Systems (QMS) from an Automotive IATF 16949 perspective with dedicated tools or from an ISO9000 perspective

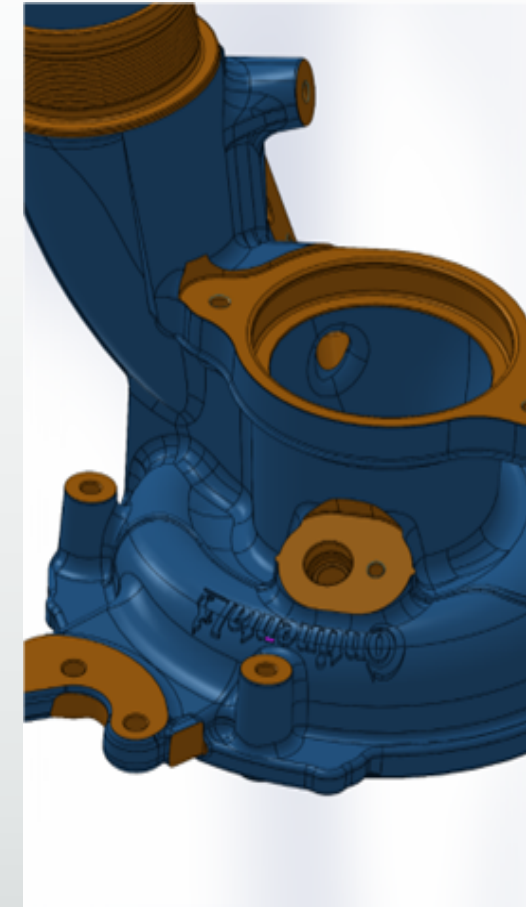
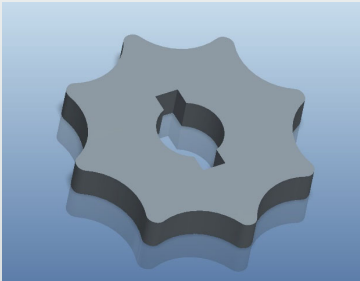
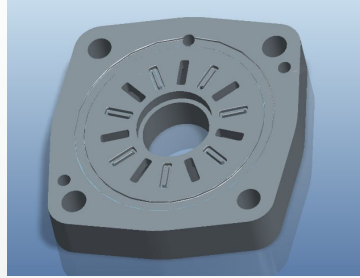
OUR MISSION IS YOUR GOAL

Some Examples of our Projects



OUR MISSION IS YOUR GOAL

Some Examples where we have Studied and designed the piece taking, carried out the Time and Method Study and performed Start-Up



Innovative Solutions

OUR MISSION IS YOUR GOAL

Our Success Factors

- **Pitching , Programming CNC Lathes and Machining Centers firsthand for 25 years**
 - Single-spindle CNC lathe (Myano with integrated 2-axis loader, Y-axis and C-axis)
 - CNC Bi-Spindle Lathe with motorized tools (HWACHEON Bi-Spindle, DOOSAN and TAKAMAZ)
 - KitakoVertical vertical lathe 4 spindles
 - Stama Bi-spindle Machining Center with fourth axis, table turn, etc.
- **Analyze and Research the optimal instrumentation for surveying the dimensions of in-process parts an activity performed for, now, 30 years**
- **Support and Research the optimal methodology for managing medium-large work orders Automotive sector, medium-small packaging sector 30 years experience**
- **Partnerships** established over time with major Machine Tool **Players**, where we have customized machine tools for the sinetrized and not only for that specific sector.
- Time-tested **Partnerships** with major **Players** in metrology.
- Established **Partnerships** with manufacturing companies working at selected high levels of quality

OUR MISSION IS YOUR GOAL

Our Modus Operandi

Pivotal Activity 1

- Meeting in the Company
- Knowledge of the Company
- Focus on the issue and sharing of information

Pivotal Activity 2

- Issuance by S.C.F. of the estimate and Preliminary Project Study
- Acceptance of the preventive and Preliminary Design Study

Pivotal Activity 3

- Initiation of both in-person and out-of-person activities
- Management of budgeted timeframe and reports of scheduled updates

Pivotal Activity 4

- End of Activities
- Verification by the Client whether all points the budgeted requirements have been met
- **Verification of project success**

Innovative Solutions

Manager Francesco Malmusi

Mobile +39 379 28.77.054

E-mail scfeng2021@gmail.com

WEB scfengineeringitaly.com

Sede Legale:

Via Modena, 119

- C.A.P. 44121 - Ferrara (FE)
P.iva e C.F. 02084770383

OUR MISSION IS YOUR GOAL